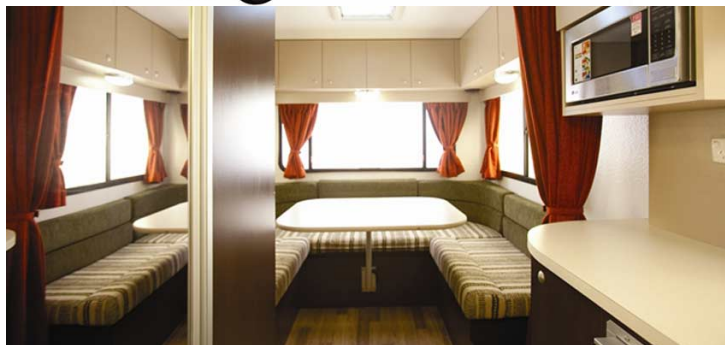


# Motorhome Star Hercule New Zealand

Modèle deluxe



Description

One of the best motorhomes for 6 people, guaranteed newer than 1 year old. Travel in total luxury through New Zealand.

Characteristics

**Star Hercule** Sleeps: 6; Seatbelts: 6; Models guaranteed newer than 1 year old; Engine: 2.1 L diesel; Approximate consumption: 14L/100km (16.8mpg); Chassis: Mercedes / VW; Automatic Transmission; Power Steering ; ABS & Airbags; Driver's cabin open to living area; Heating and AC from driver's cabin while driving; Heating while parked by propane, while hooked up to 240V power supply; Radio with CD Player; TV with DVD Player

**"Self Contained" Vehicle**

**Note: children under 6 months old are not permitted to travel in this vehicle.**

Propane: allows for the function of the refrigerator, water heater, and heater while parked and not connected to power supply

240V Electrical Hook-up

Auxiliary Battery: allows for the function of the interior lights. 12 hour autonomy, recharged while driving or hooked up to power supply

12V Outlet: remember to bring your adaptors to charge your small electronics such as phones and cameras

**Complimentary Equipment:** Extinguisher; 2 Child Seat/Booster Seat Anchors; Premium kits per person include bed linens, dishes, cookware, towels, and washcloths; Motorhome accessories include broom, dustpan, extinguisher, seals, hoses, and cords for hook-up; First night welcome kit includes bathroom necessities, cleaning, and breakfast; Camping Guide

**Optional Equipment:** Camping Chairs; Camping Table; GPS; Portable Heater; Toilet Chemicals; Snow Chains; First Aid Kit

**Dimensions:** Length: 7.70 m (25'4"); Width: 2.30 m (7'7"); Height: 3.50 m (11'6"); Interior Height: 2.10 m (6'10"); Fuel Tank Capacity: 75 L (19.8gal); Fresh Water Tank: 100 L; Waste Water Tank: 100 L (26.4gal); Propane bottle: 2 x 4.5 kg (9.9lbs.)

**Beds:** Loft Bed: 210 cm x 140 cm (6'10" x 4'11"); Dinette Bed: 200 cm x 120 cm (6'6" x 3'11"); Rear Bed: 210 cm x 140 cm (6'10" x 4'7"); Security net on loft bed

**Bathroom and Kitchen:** Refrigerator/Freezer 150L (39gal); Micro-wave (240V); 3 Burner Stove; Dishes and Cookware; Shower; Toilet; Sink with hot and cold water