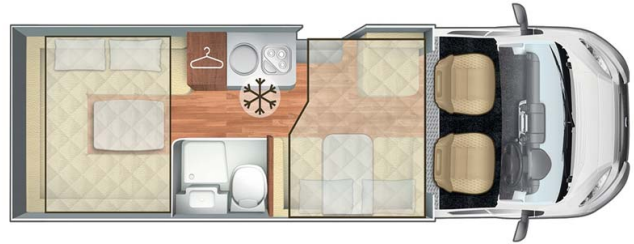


Profile Bothy Navigator Scotland

Modèle standard



Description	The Bothy Navigator sleeps 4 people and is perfect for those that like socialising in the motorhome as it has a spacious rear lounge. For the evening, the lounge can easily be converted into two single beds or a large double bed. There is an electric drop down bed above the dinette area.
Characteristics	<p>Bothy Navigator 4 Berth Sleeps : 4 (6 seatblets) Chassis Fiat Diesel 2.3 MultiJet engine (Adblue required) Automatic 6 gear transmission Cruise control Backup camera ABS Airbags Internal walk-through access Central locking RHD Exterior locker storage</p>
Fuel	<p>Diesel (Adblue required) Average consumption: 10-11 L/100km (25-28 miles per gallon)</p>

Dimensions	Length: 7.50 m (24'7") Width: 2.35 m (7'9") Height: 3.00 m (9'11")
Passengers	4 sleeps and 6 seatbelts
Beds	Rear double bed: 216 x 187 cm (85" x 74") Electric drop down double bed: 187 x 133 cm (74" x 52")
Kitchen	Sink (hot and cold water) Cooker Oven Fridge Dishes and cutlery Kettle and toaster
Shower/Toilet	Shower Toilet Hot and cold water
Heating/Air Conditioning	Heating and air conditioning like in a car When parked the heating functions using gas or an external power outlet/hook up of 240V
Energy	Propane Gas. Allows the use of the refrigerator, hob, water heater, and heater, while not connected to an electrical hook-up. Electrical Connection 110V (Hook-up). Needed to fully power the motorhome. Allows the use of the socket and fridge. A generator can also be used in place of a 240V mains hook up. Auxiliary Battery. Allows for use of lights, water pump, TV and USB charging points while the vehicle is not hooked up to the 240V connection. Batteries will last around 12 hours depending on use, and are recharged when driving the vehicle, hooked up the 110V connection or by the photovoltaic panels. 12V outlet: Remember to bring your adaptors for charging your personal electronics such as cameras and phones. 120W photovoltaic panels
Audio & Connexions	Radio AM/FM TV and DVD player Roof mounted TV aerial
Complementary Equipment	Anchor points for baby/child/booster seats Backup camera Roof mounted TV aerial Photovoltaic panels UK campsite guides and Atlas Dishes and cutlery Kettle and toaster Internal walk-through access Central locking Window blinds and flyscreens Exterior locker storage: - height: 45 cm - width: 70 cm - length: 215 cm
Optional Equipment	Baby/child/booster seats Bike rack (up to 4 bikes) Sheets, duvets and pillows Towels Camping table and chairs Sat Nav Snow chains Toilet chemicals BBQ European mains hook up adaptor Clothes rack Adblue

All floorplans, measurements and specifications are approximate, not guaranteed and subject to change at any time without prior notice.